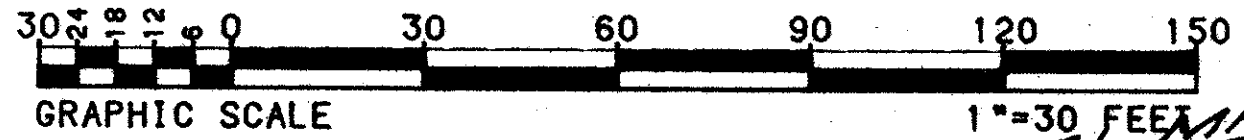


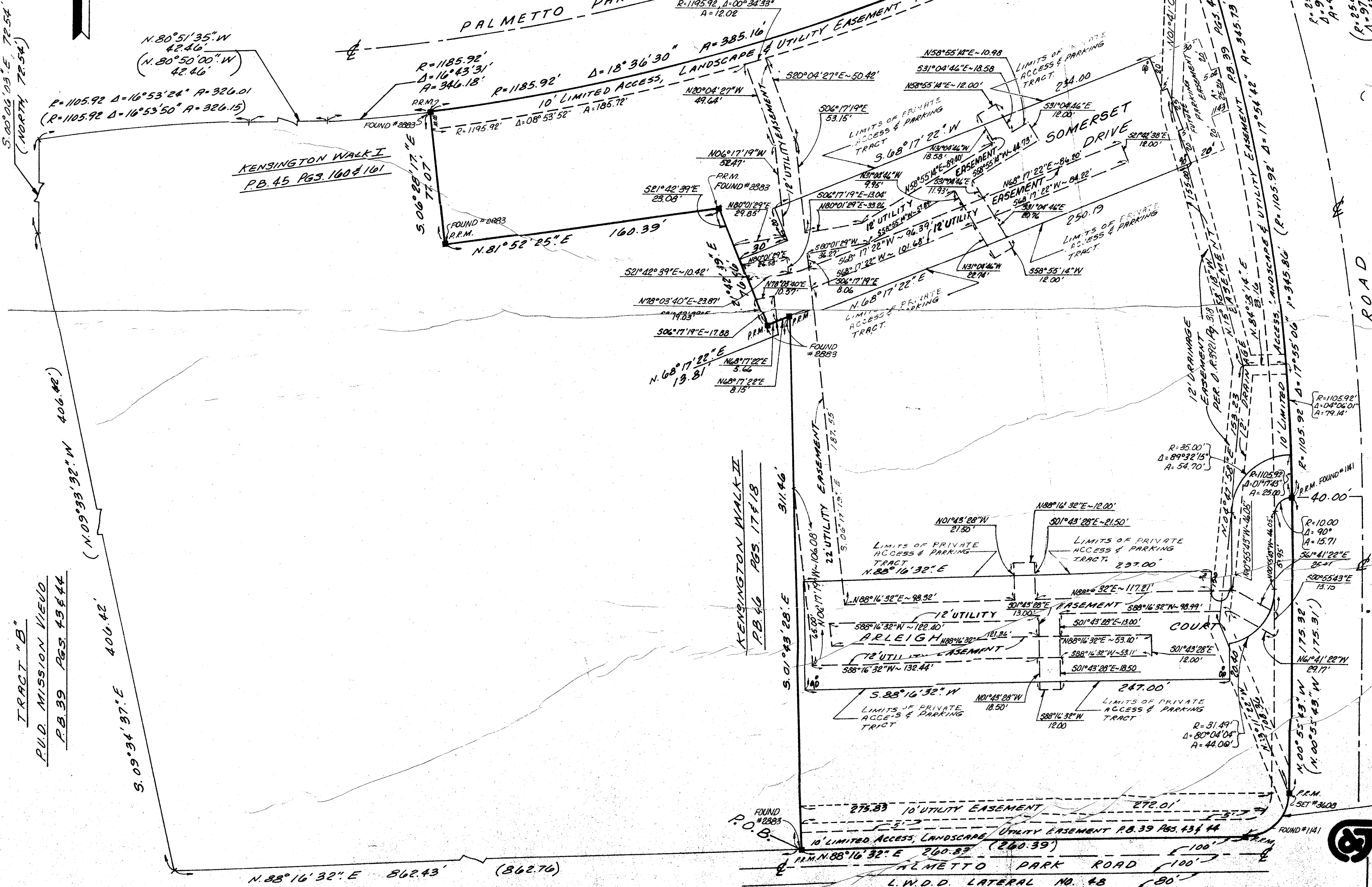
47/2

KENSINGTON WALK III

BEING A PORTION OF A P.U.D. AND A REPLAT OF A PORTION OF TRACT "A" OF THE PLAT OF "P.U.D. MISSION VIEJO", PLAT BOOK 39 PAGES 43 & 44 OF THE PUBLIC RECORDS OF PALM BEACH COUNTY, FLORIDA LYING IN THE SOUTHWEST ONE-QUARTER (S.W. 1/4) OF SECTION 22, TOWNSHIP 47 SOUTH, RANGE 42 EAST PALM BEACH COUNTY, FLORIDA
 JULY, 1983



BOCA DEL MAR NO. 4
 TRACT 27
 P.B. 30 PG. 85



SURVEY NOTES:

() DENOTES PLAT OR DEED DIMENSIONS BASED ON PLAT OF "MISSION VIEJO", PLAT BOOK 39, PAGES 43 & 44.

ALL OTHER BOUNDARY AND INTERNAL DIMENSIONS SHOWN HEREON ARE BASED ON FIELD CONDITIONS AND MEASUREMENTS AS SURVEYED IN MARCH, 1982.

VEHICULAR ACCESS IS PROHIBITED FROM PALMETTO PARK ROAD.

NO BUILDINGS OR ANY KIND OF CONSTRUCTION SHALL BE PLACED ON UTILITY OR DRAINAGE EASEMENTS.

NO STRUCTURES, TREES OR SHRUBS SHALL BE PLACED ON DRAINAGE EASEMENTS.

APPROVAL OF LANDSCAPING ON UTILITY EASEMENTS OTHER THAN WATER AND SEWER SHALL BE ONLY WITH THE APPROVAL OF ALL UTILITIES OCCUPYING SAME.

P.U.D. TABULATION:

TOTAL ACREAGE	3.760 ACRES
TOTAL NO. OF DWELLINGS	76
GROSS DENSITY	20.21 UNITS/ACRE

■ DENOTES P.R.M. (PERMANENT REFERENCE MONUMENT)

BEARINGS AS SHOWN HEREON ARE BASED UPON A BEARING OF NORTH 88°16'32" EAST FOR THE SOUTH LINE OF TRACT "A" OF THE PLAT "P.U.D. MISSION VIEJO". ALL BEARINGS ARE RELATIVE TO IT.

WHERE DRAINAGE AND UTILITY EASEMENTS INTERSECT, DRAINAGE EASEMENTS SHALL HAVE PRECEDENCE

TRACT "B"
 P.U.D. MISSION VIEJO
 P.B. 39 PGS. 43 & 44

KENSINGTON WALK II
 P.B. 46 PGS. 17 & 18

BOCA DEL MAR NO. 4
 TRACT 35
 P.B. 30 PG. 85

0205-010

47/2

SHEET 2 OF 2 SHEETS
 PREPARED BY
CRAVEN THOMPSON & ASSOCIATES, INC.
 SURVEYORS - ENGINEERS - PLANNERS - ARCHITECTS
 5901 N.W. 31st AVENUE - FORT LAUDERDALE, FLORIDA 33509
 DATED: 06/19/83 DRAWN BY: J.H. FITZGERALD